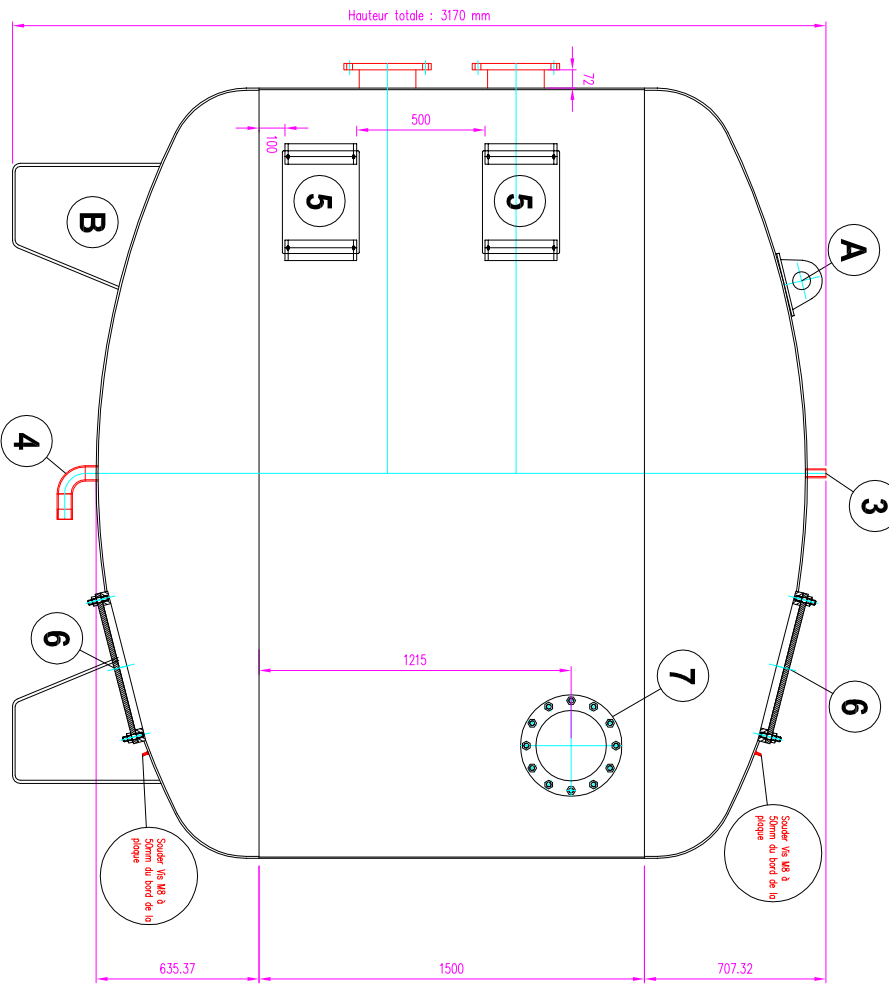
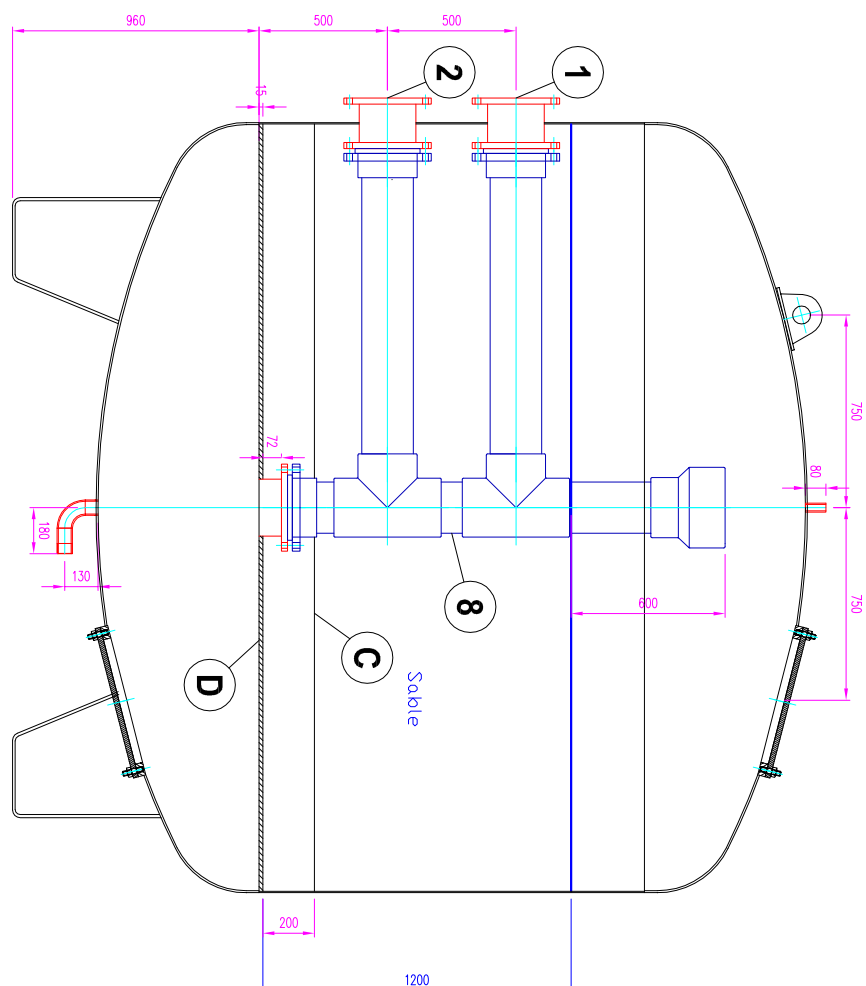


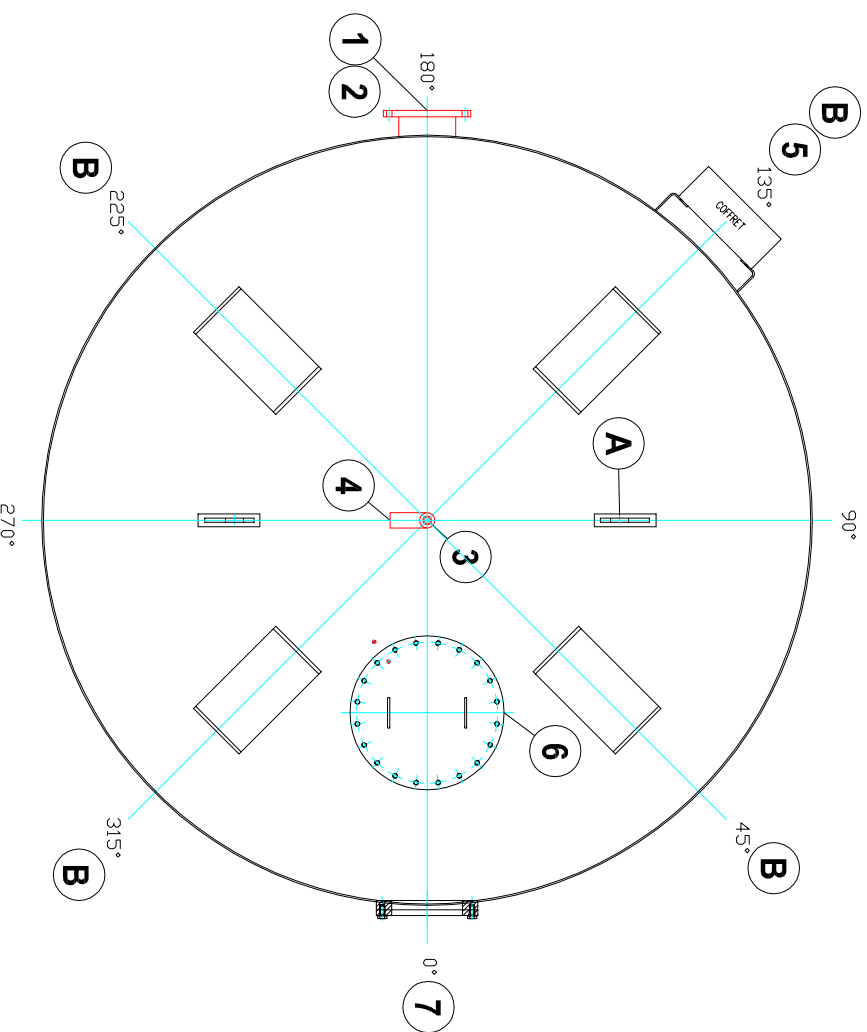
VUE DE FACE



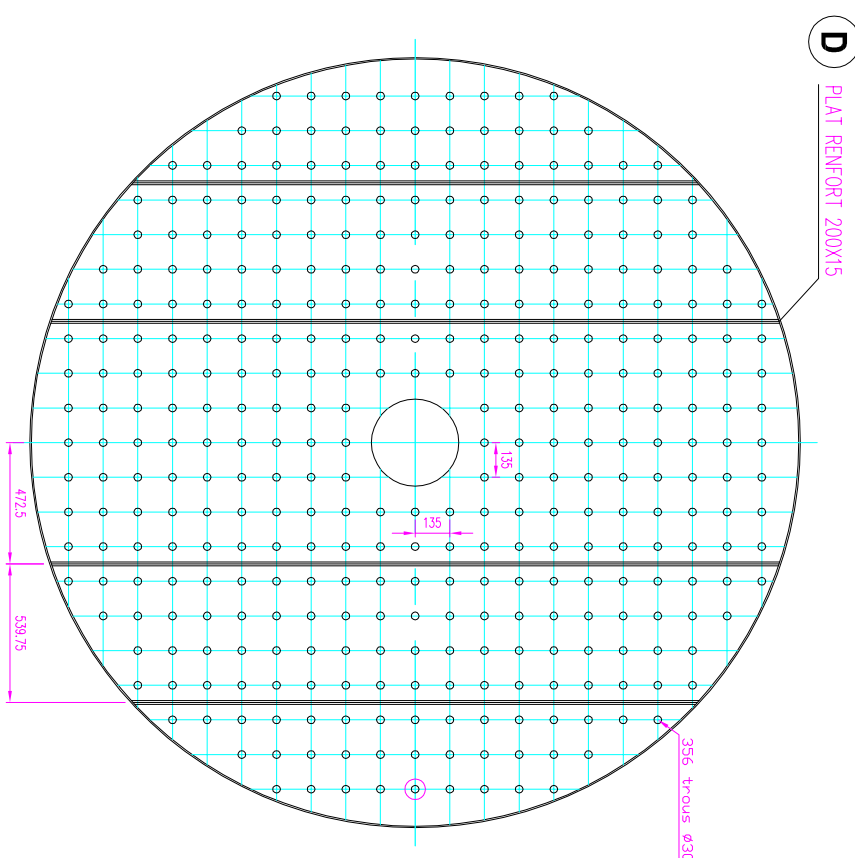
VUE EN COUPE



VUE DE DESSUS



VUE DU PLANCHER



SPÉCIFICATION DU MATÉRIEL

| |
|-------------------------------------|
| TOLE AGER S355K e = 6 mm |
| TOLE RIGIDE PVC AGER S355K e = 8 mm |
| VOLUME : 1500 m ³ |
| VOLUME TOLE : 64,5 m ³ |
| POIDS A VIDE : 3000kg |

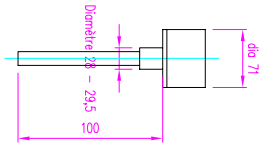
ACCESSOIRES

| REP. | Nb. | DESIGNATION |
|------|-----|--|
| A | 2 | OREILLE DE LEVAGE (selon calcul dynamique) |
| B | 4 | RND |
| C | 1 | PLANCHER (5mm) |
| D | 4 | REINFOR FLANCHER |

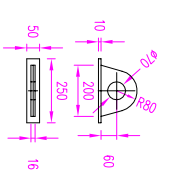
NOMENCLATURE DES PLOUAGES ET TUBULURES

| REP. | Nb. | DN | FONCTION |
|------|-----|-----|-----------------------------|
| 1 | 1 | 200 | ENTREE FILTRE |
| 2 | 1 | 200 | SORTIE FILTRE / ENTRÉE AIR |
| 3 | 1 | 170 | RIGIDE FILTRE ÉQUILIBRÉ T5 |
| 4 | 1 | 270 | NOUVEAU FILTRE ÉQUILIBRÉ T5 |
| 5 | 2 | 500 | SUPPORT COFFRET PC |
| 6 | 2 | 500 | TROU D'HOMME |
| 7 | 1 | 250 | HARLOT |
| 8 | 1 | 200 | EQUIPEMENT INTERIEUR PVC |

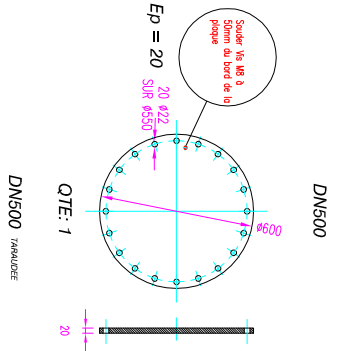
CREPINE



A Orelle de levage



6 TROU D'HOMME



5 Platine de fixation coffret PC

